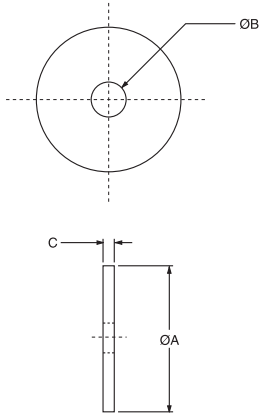


# BARRY-BOND MOUNT SERIES:

## Snubbing Washer

### BARRY-BOND MOUNT SERIES SNUBBING WASHER



The use of snubbing washers is recommended to ensure proper static and dynamic loading of the isolator and retention of suspended equipment under severe shock environments.

Snubbing washers are ordered by separate part numbers as shown in the table below. The standard material is low-carbon steel and the standard finish is zinc plate. Other materials and finishes are available upon request.

Part Number	Head Washer Part Number	Part Dimensions (Inches)			Tail Washer Part Number	Part Dimensions (Inches)		
		A	B	C		A	B	C
BC-1120-1	9810276-02804	1.25	0.40	0.125	9810276-01804	1.12	0.40	0.125
BC-1120-3	9810276-02804	1.25	0.40	0.125	9810276-01804	1.12	0.40	0.125
BC-1121-2	9810276-04804	2.00	0.52	0.125	9810276-03804	1.50	0.52	0.125
BC-1121-4	9810276-04804	2.00	0.52	0.125	9810276-03804	1.50	0.52	0.125
BC-1122-2	9810276-05804	2.25	0.52	0.125	9810276-04804	2.00	0.52	0.125
BC-1122-4	9810276-05804	2.25	0.52	0.125	9810276-04804	2.00	0.52	0.125
BC-1123-2	9810276-08804	2.88	0.66	0.125	9810276-06804	2.25	0.64	0.125
BC-1123-5	9810276-08804	2.88	0.66	0.125	9810276-06804	2.25	0.64	0.125
BC-1124-2	9810276-10804	3.50	0.64	0.190	9810276-07804	2.50	0.64	0.125
BC-1124-5	9810276-10804	3.50	0.64	0.190	9810276-07804	2.50	0.64	0.125
BC-1125-2	9810276-11804	4.25	0.80	0.190	9810276-09804	3.00	0.80	0.190
BC-1125-4	9810276-11804	4.25	0.80	0.190	9810276-09804	3.00	0.80	0.190