

HR MOUNT SERIES

Vibration mounts for effective isolation of small to medium sized diesel engines.

APPLICATIONS

- Small to medium diesel engines
- Generators
- Recreational/off road vehicles
- Farm and construction equipment
- Motors
- Machinery, pumps & compressors

FEATURES

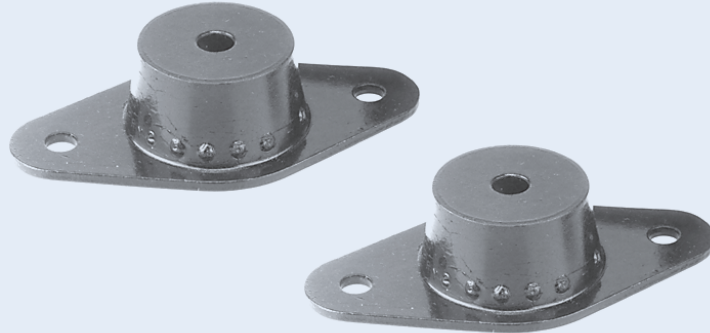
- Wide load range
- Axial to radial stiffness of 6:1
- Low stiffness in roll mode
- Sturdy, reliable construction

BENEFITS

- Built-in rebound protection
- Excellent performance even with difficult to isolate five, three, two or even single cylinder engines
- Overlapping load ranges
- Fail-safe when used with snubbing washer

LOAD RANGE

- 2 Sizes and 5 stiffness from 25 - 400 lbs. per isolator



Barry HR Series mounts are best suited for isolation of diesel engines with five or less cylinders for on or off-highway applications. The standard neoprene elastomer provides resistance to oils and most solvents. Other elastomers are available, consult factory for more information.

Specifications

• Natural Frequency	10-20 Hertz
• Transmissibility at resonance	8:1
• Resilient Element	Neoprene
• Standard Materials	Steel and sintered metal
• Weight	7 oz. (25453) 9 oz. (25641)

Environmental Data

- Neoprene elastomer has an operating temperature range of -20°F to +180°F (-30°C to +82°C) and is resistant to oils, most solvents and ozone.