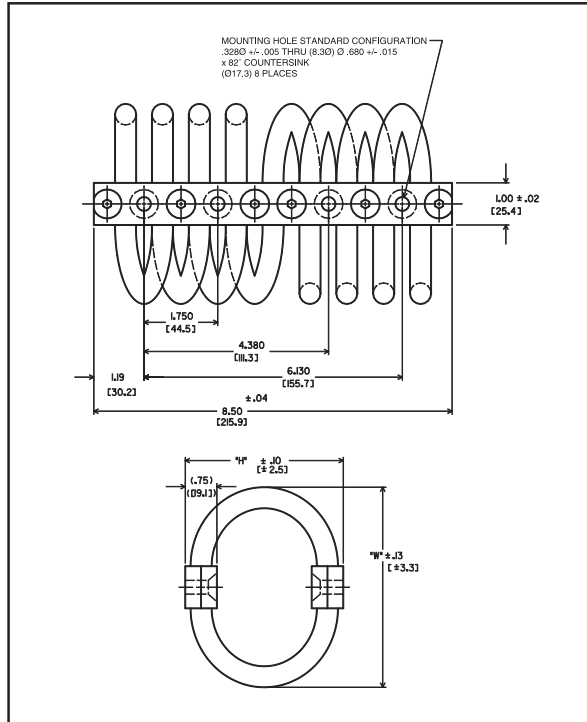


# CABLEMOUNT MOUNT SERIES: CM05008

## Dimensions & Load Ratings



| SUFFIX | MOUNTING HOLE CONFIGURATION   |
|--------|---|
| NONE   | Standard Configuration as shown in drawing  |
| - A    | 1/4 -28 Threaded inserts in both retaining bars   |
| - B    | 1/4 -28 Threaded inserts in one retaining bar and standard configuration as shown in drawing in other retaining bar                     |
| - C    | M 6 x 1.0 Threaded inserts in both retaining bars   |
| - D    | M 6 x 1.0 Threaded inserts in one retaining bar and standard configuration as shown in drawing in other retaining bar w/90° countersink |
| - E    | Standard configuration as shown in drawing w/90° countersink  |

| PART #    | DIMENSIONS |      | COMPRESSION |                 | SHEAR       |                 | ROLL        |                 | 45° COMP/ROLL |                 |
|-----------|------------|------|-------------|-----------------|-------------|-----------------|-------------|-----------------|---------------|-----------------|
|           | H          | W    | Load Rating | Max. Deflection | Load Rating | Max. Deflection | Load Rating | Max. Deflection | Load Rating   | Max. Deflection |
| CM05008-1 | 3.25       | 4.00 | 625         | 1.0             | 190         | 1.0             | 210         | 1.0             | 400           | 1.5             |
| CM05008-2 | 3.50       | 4.13 | 475         | 1.1             | 150         | 1.1             | 160         | 1.1             | 300           | 2.0             |
| CM05008-3 | 3.75       | 4.75 | 275         | 1.3             | 70          | 1.5             | 110         | 1.5             | 250           | 2.3             |
| CM05008-4 | 4.25       | 5.25 | 200         | 1.5             | 55          | 1.6             | 75          | 1.6             | 170           | 2.8             |
| CM05008-5 | 4.90       | 5.65 | 120         | 1.8             | 50          | 1.7             | 40          | 1.7             | 130           | 3.5             |
| CM05008-6 | 5.40       | 6.13 | 100         | 2.0             | 38          | 2.0             | 35          | 2.0             | 90            | 4.0             |
| CM05008-7 | 6.10       | 7.10 | 60          | 2.2             | 28          | 2.2             | 30          | 2.2             | 55            | 4.5             |

Natural Frequency at rated load = approx. 10 Hertz