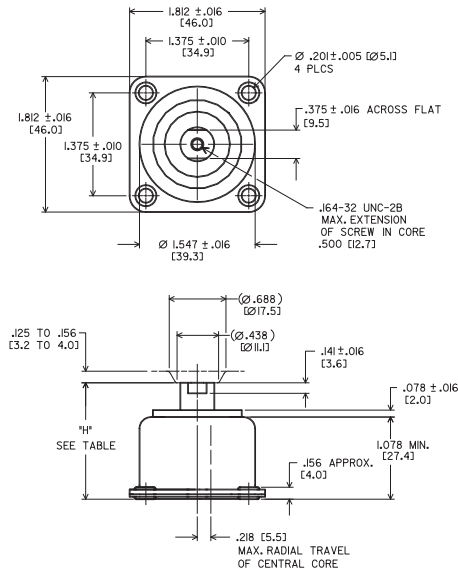


# H-MOUNT SERIES: H44

## Dimensions & Performance Characteristics

H44 Dimensional Drawing



"H"

"H"		
TYPE	H44-AA	H44-BA
MIN. COMPRESSED	.98 [24.9]	1.13 [28.7]
APPROX. UNDER MIN. LOAD	1.40 [35.6]	1.56 [39.6]
MAX. EXTENDED	1.63 [41.4]	1.79 [45.5]

LOAD RANGES

Part #	Static Load Range (lbs.)
H44-AA-1/2 & BA-1/2	0.25 - 0.5
H44-AA-1 & BA-1	0.5 - 1.0
H44-AA-2 & BA-2	1.0 - 2.0
H44-AA-3 & BA-3	1.5 - 3.0
H44-AA-4 & BA-4	2.0 - 4.0
H44-AA-6 & BA-6	4.0 - 6.0
H44-AA-10 & BA-10	5.0 - 10.0

H44 Load vs Natural Frequency

