

# 2K MOUNT SERIES

Two stage shock mount and vibration isolator for severe dynamic environments such as shipboard and ground vehicles.

## APPLICATIONS

- Naval sonar equipment
- Shipboard electronics
- Radar installations
- Computer & video displays

## FEATURES

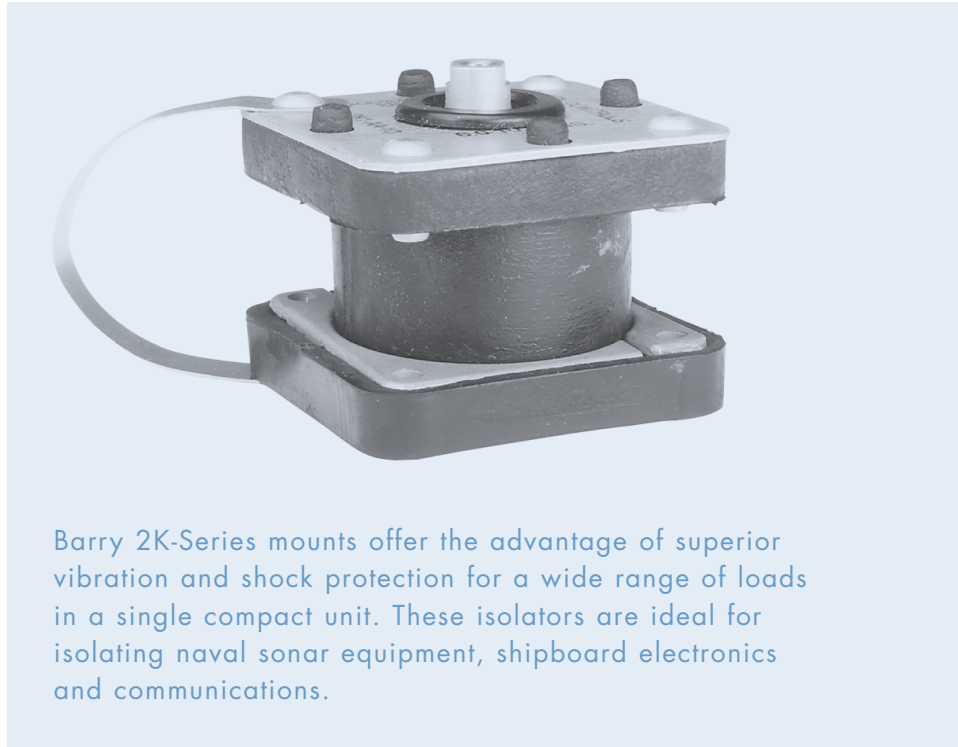
- Combines shock and vibration isolation in a single isolator
- Protects from vibratory inputs as low as 10 Hz
- Designed for base mounting only
- Wide load range for most applications

## BENEFITS

- Elastomeric shock attenuating elements have as much as 1 inch of available deflection (1.5 inches for 2KS)
- Limit shock transmissions to 20g's when subjected to a five foot hammer blow per MIL-S-901
- Many custom versions are available. Consult factory for more information

## LOAD RANGE

- 2K1 Series = 4 load ratings from 1 - 10 lbs. per mount
- 2K2 Series = 8 load ratings from 4 - 90 lbs. per mount
- 2KS Series for loads from 250 - 6,000 lbs.



Barry 2K-Series mounts offer the advantage of superior vibration and shock protection for a wide range of loads in a single compact unit. These isolators are ideal for isolating naval sonar equipment, shipboard electronics and communications.

## Specifications

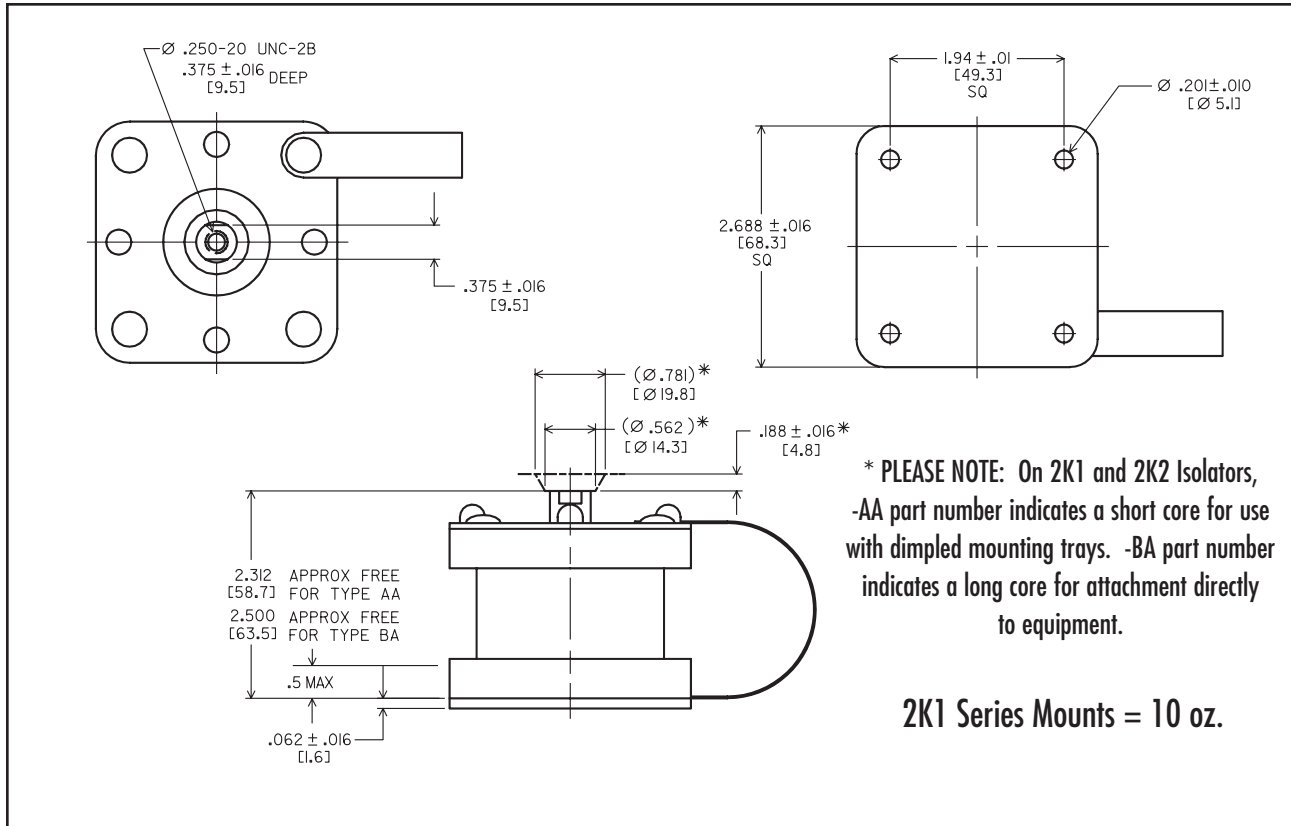
• Natural Frequency	
Vibration Element	6-8 Hertz vertical
Shock Element	15 Hertz
• Transmissibility at resonance	
Vibration Element	2.5 Max.
Shock Element	10 Max.
• Resilient Element	
Vibration Element	Friction Damped Spring
Shock Element	Neoprene or Nitrile Elastomer
• Standard Materials	Varies with model (Standard Beryllium Copper Restraining Strap)
• Weight	See dimensional drawings

## Environmental Data

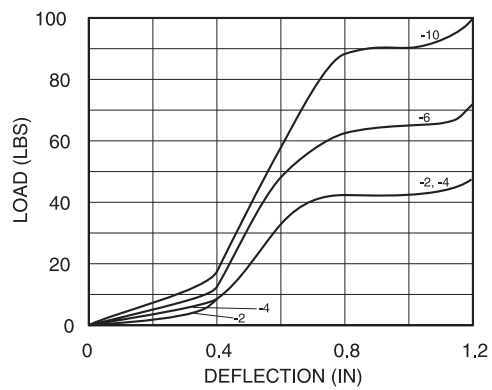
- 2K1 and 2K2 isolators are for use with lightweight MIL-S-901 applications.
- 2KS systems are for use with medium weight MIL-S-901 applications.
- Isolators and systems met MIL-STD-16400 inclination, temperature, humidity and salt spray specifications, MIL-STD-167 vibration tests and MIL-M-17185 environmental and oil immersion tests.
- Operating temperature range is -20°F to +180°F (-30°C to +82°C).
- Isolators are unaffected by humidity, sand, dust and fungus.

# 2K SERIES: 2K1

## Dimensions & Performance Characteristics



2K1 Load vs. Deflection



2K1 LOAD RATINGS

PART #	STATIC LOAD RANGE /ISOLATOR (LBS.)
2K1-AA-2 & BA-2	1-2
2K1-AA-4 & BA-4	2-4
2K1-AA-6 & BA-6	4-6
2K1-AA-10 & BA-10	6-10

# 2K SERIES: 2K2

## Dimensions & Performance Characteristics

**2K2 Series Mounts = 1.6 lbs.**

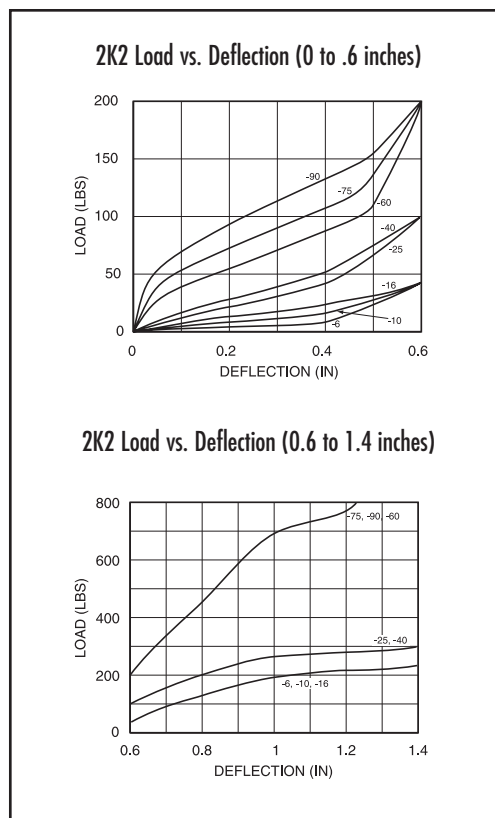
**Top View Dimensions:**  
 Overall width:  $4.062 \pm .031$  [103.2] SQ  
 Hole diameter:  $\varnothing 1.625$ \* [41.3]  
 Hole diameter:  $\varnothing 1.125$ \* [28.6]  
 Hole diameter:  $\varnothing .266 \pm .010$  [6.8] THRU METAL INSERT 4 HOLES  
 Thread:  $.375-16 \text{ UNC-2B}$   
 Depth:  $.562 \pm .016$  DEEP [14.3]

**Side View Dimensions:**  
 Total height:  $3.156$  APPROX FREE FOR AA TYPE [80.2]  
 Total height:  $3.406$  APPROX FREE FOR BA TYPE [86.5]  
 Core height:  $.250 \pm .016$ \* [6.4]  
 Mount height:  $.062 \pm .016$  [1.6]  
 Core diameter:  $2.750 \pm .016$  SQ [69.8]  
 Max gap:  $.5 \text{ MAX}$

**Bottom View Dimensions:**  
 Overall width:  $4.000 \pm .031$  [101.6] SQ

**\* PLEASE NOTE:** On 2K1 and 2K2 Isolators, -AA part number indicates a short core for use with dimpled mounting trays. -BA part number indicates a long core for attachment directly to equipment.

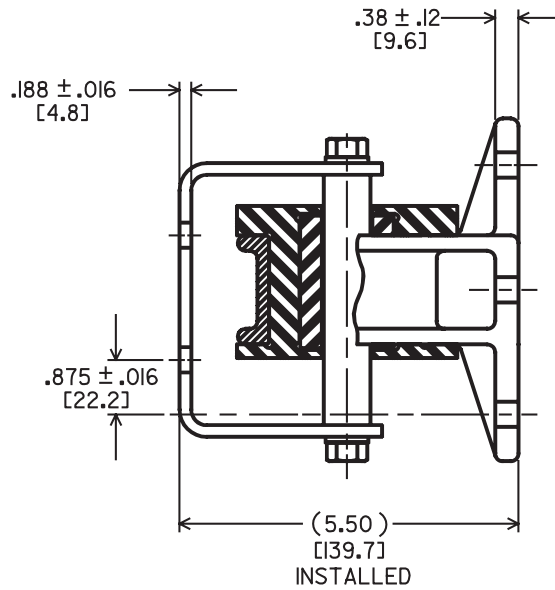
2K2 LOAD RATINGS	
PART #	STATIC LOAD RANGE /ISOLATOR (LBS.)
2K2-AA-6 & BA-6	4-6
2K2-AA-10 & BA-10	6-10
2K2-AA-16 & BA-16	10-16
2K2-AA-25 & BA-25	16-25
2K2-AA-40 & BA-40	25-40
2K2-AA-60 & BA-60	40-60
2K2-AA-75 & BA-75	60-75
2K2-AA-90 & BA-90	75-90



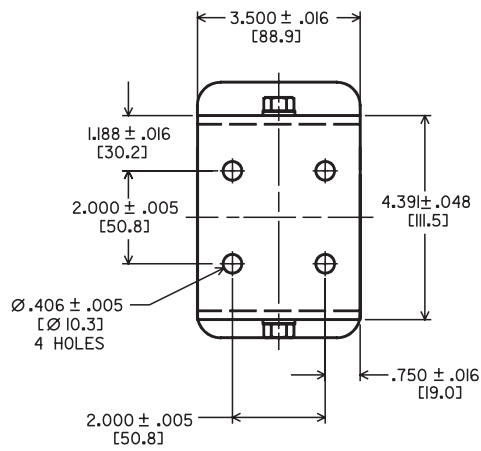
# 2K MOUNT SERIES LIGHTWEIGHT STABILIZER:

## Dimensional Drawing

### LIGHTWEIGHT STABILIZER 21335-5 DIMENSIONAL DRAWINGS



### 2K EQUIPMENT INTERFACE



### 2K BULKHEAD INTERFACE

