

500 MOUNT SERIES

Low-profile, high capacity mounts for vibration and shock protection.

APPLICATIONS

- Truck, bus and marine engines
- Generators
- HVAC equipment
- Electronic equipment
- Truck cabs
- Machinery, pumps & compressors

FEATURES

- Fail-safe when used with snubbing washer
- Axial to radial stiffness of 1:1
- Low natural frequency
- Sturdy, reliable construction

BENEFITS

- Economical
- Bonded construction provides constant performance characteristics
- Overlapping load ranges

LOAD RANGE

- 7 sizes with 31 load ratings to 1,780 lbs. per isolator



500 Series mounts are low cost isolators that provide high load carrying capacity, compact size and stability. These all attitude mounts are perfect for isolating truck, bus and marine engines.

Specifications

• Natural Frequency	8-18 Hertz
• Transmissibility at resonance	8:1
• Resilient Element	Neoprene
• Standard Materials	Sintered metal and cold-rolled steel
• Weight	See dimensional drawings

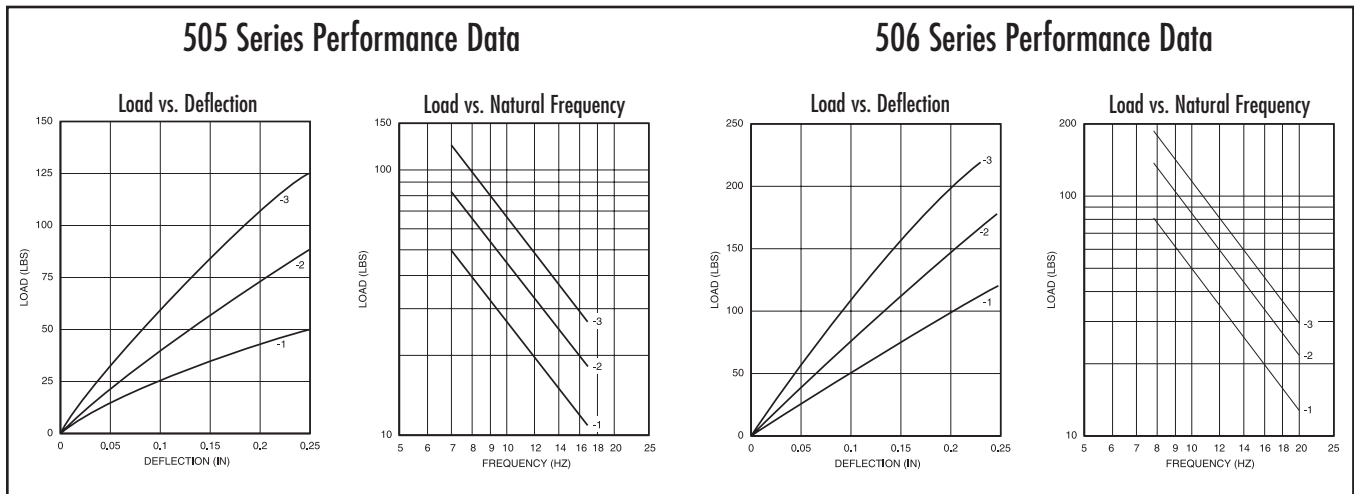
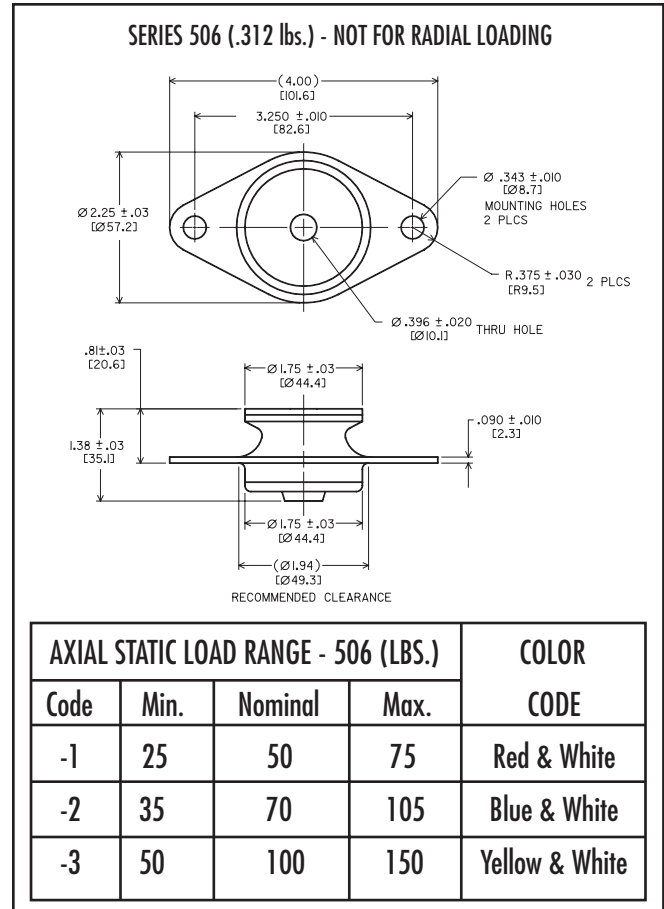
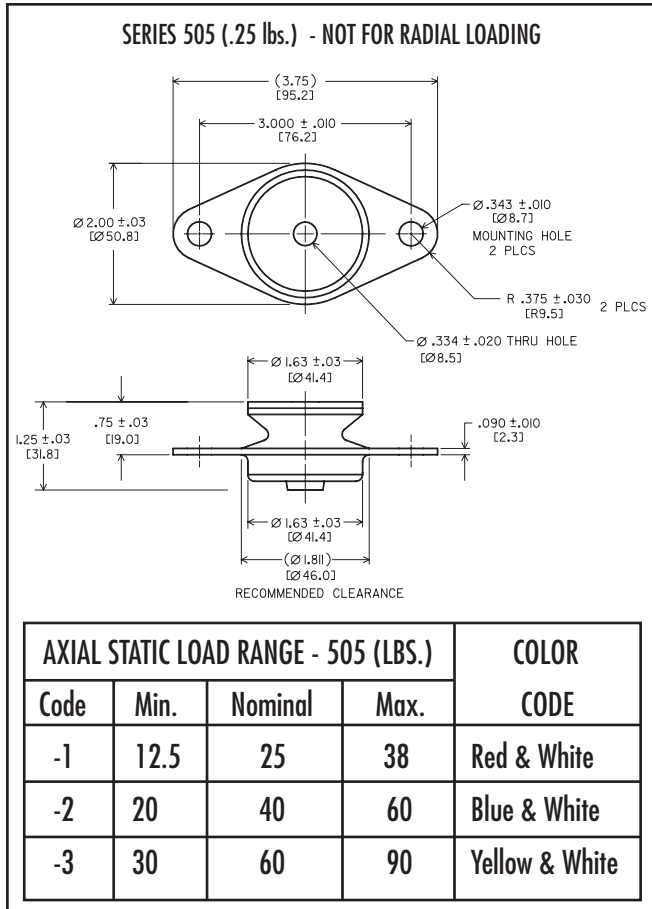
Environmental Data

- Neoprene elastomer has an operating temperature range of -20°F to +180°F (-30°C to +82°C) and is resistant to oils, most solvents and ozone.
- Special elastomers and finishes are available for applications in severe environments. Please note that Silicone elastomer is not compatible with nickel plating.

Caution: Not suitable for skid steer loaders.

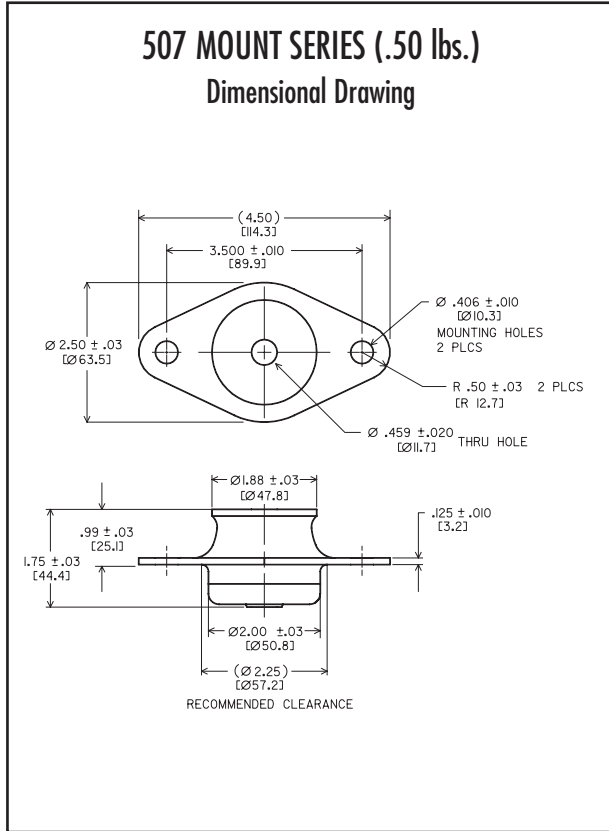
500 MOUNT SERIES: 505/506

Dimensions & Performance Characteristics

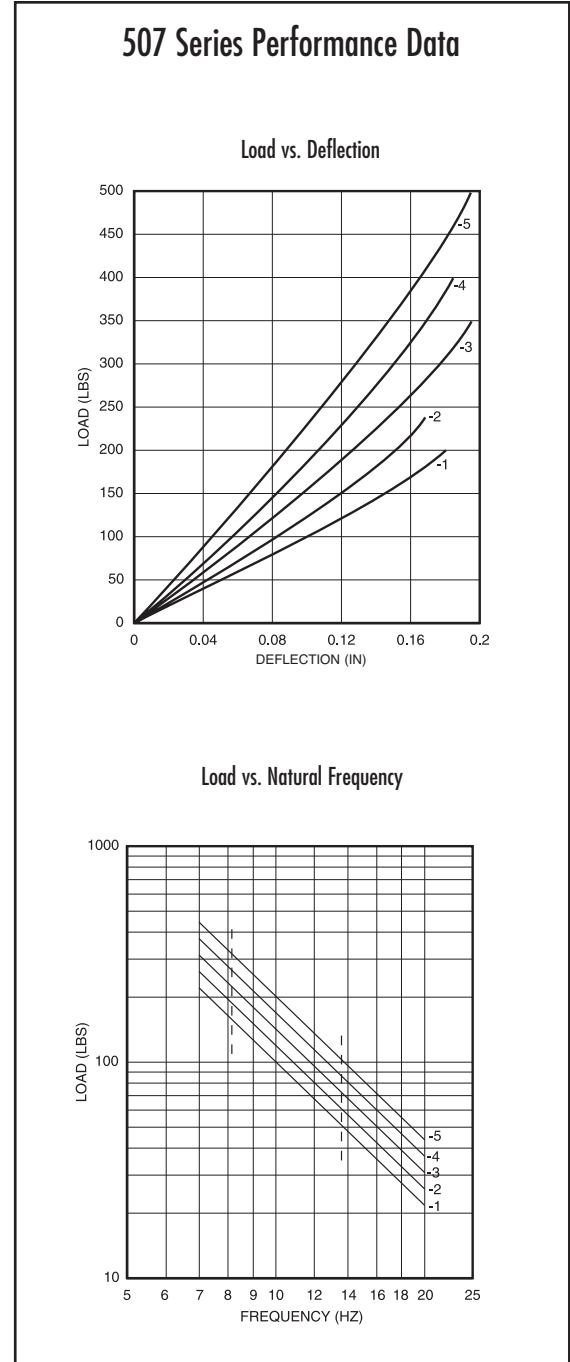


500 MOUNT SERIES: 507

Dimensions & Performance Characteristics

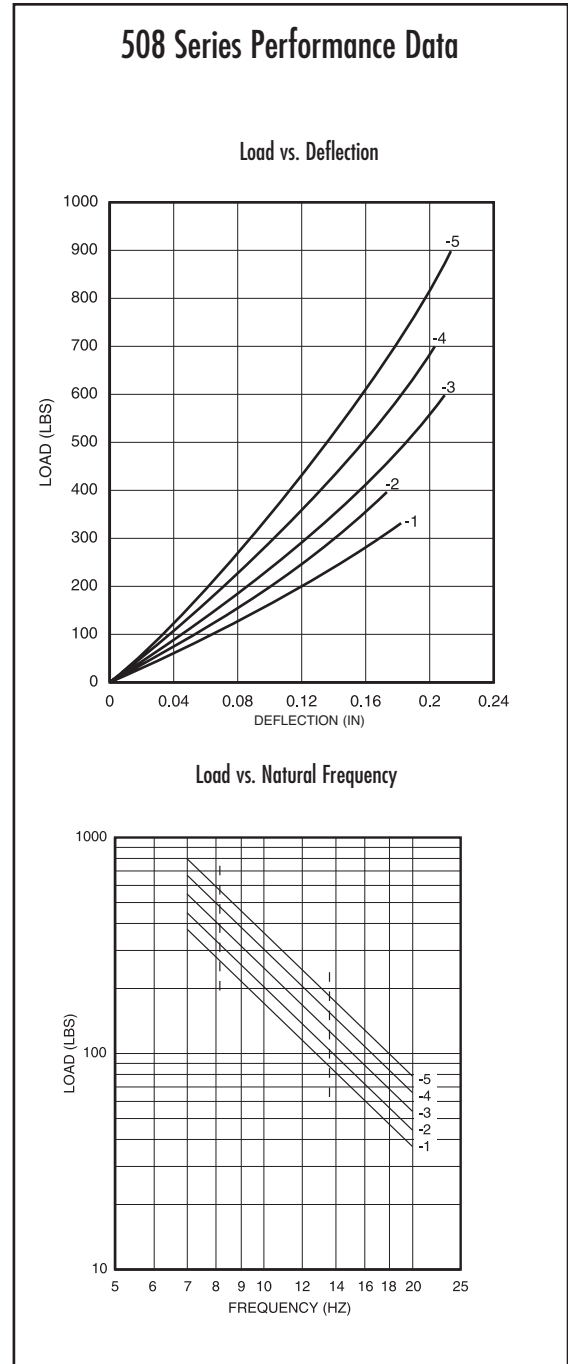
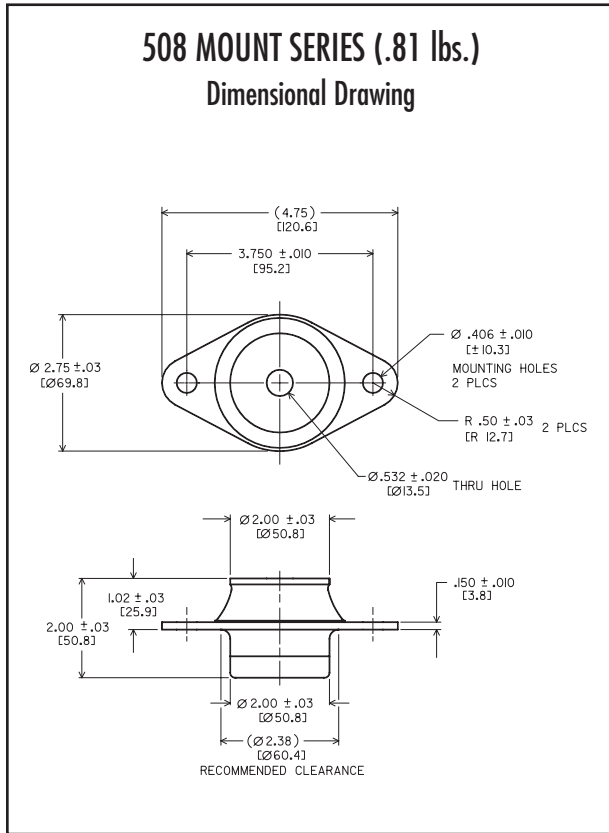


Code	507 SERIES LOAD RANGE (lbs.)				COLOR CODE
	Axial Static Load Range		Radial Static Load Range		
	Nominal	Max.	Nominal	Max.	
-1	100	150	50	100	Red & White
-2	120	180	60	120	Orange & White
-3	150	225	75	150	Yellow & White
-4	180	270	90	180	Green & White
-5	220	330	110	220	Blue & White



500 MOUNT SERIES: 508

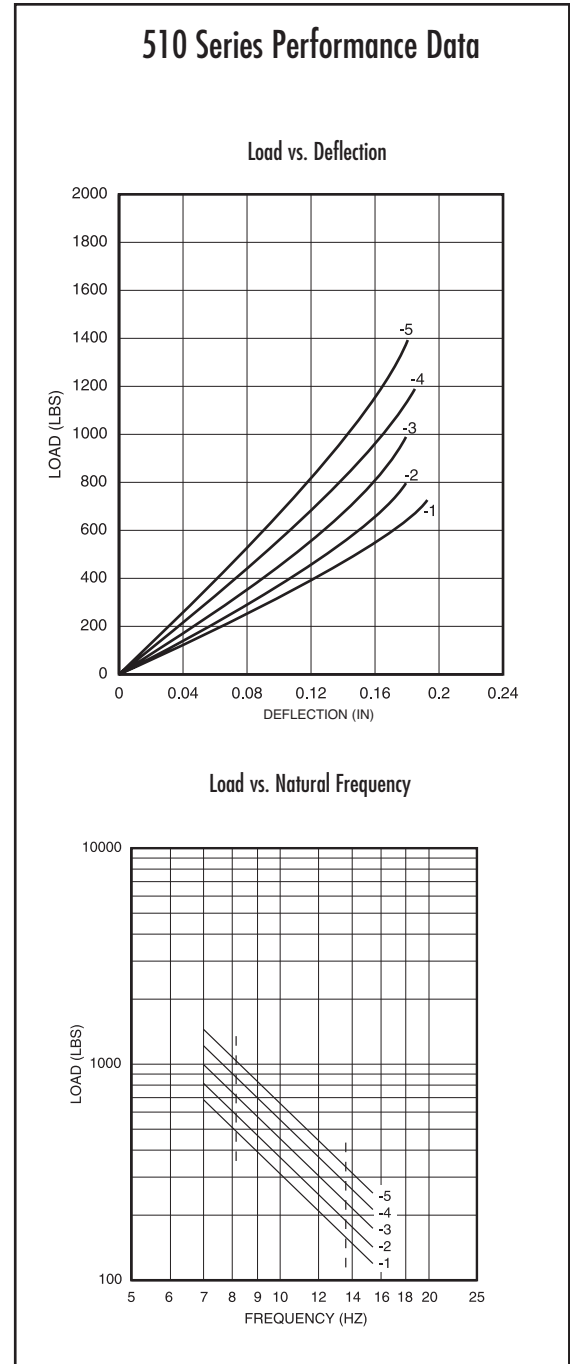
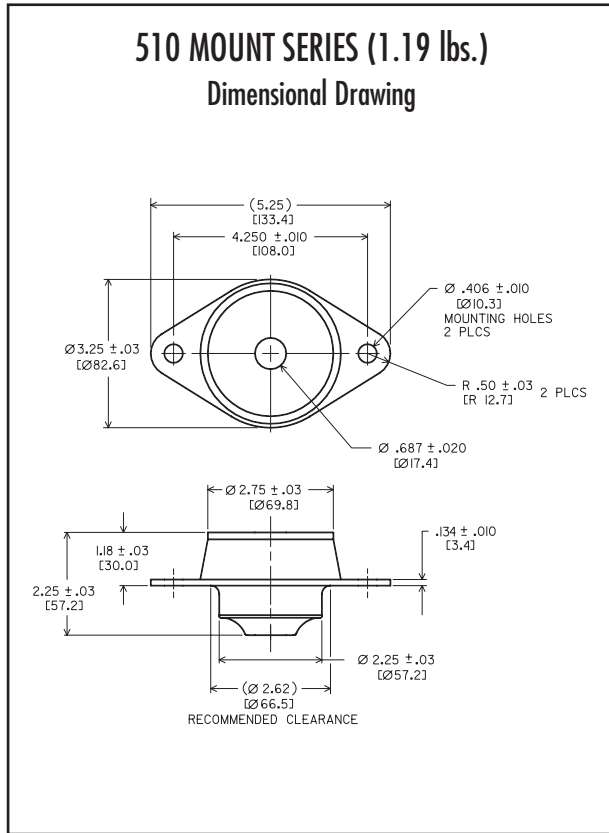
Dimensions & Performance Characteristics



508 SERIES LOAD RANGE (lbs.)					COLOR CODE
Code	Axial Static Load Range		Radial Static Load Range		
	Nominal	Max.	Nominal	Max.	
-1	180	270	90	180	Red & White
-2	220	330	110	220	Orange & White
-3	260	390	130	260	Yellow & White
-4	320	480	160	320	Green & White
-5	380	570	190	380	Blue & White

500 MOUNT SERIES: 510

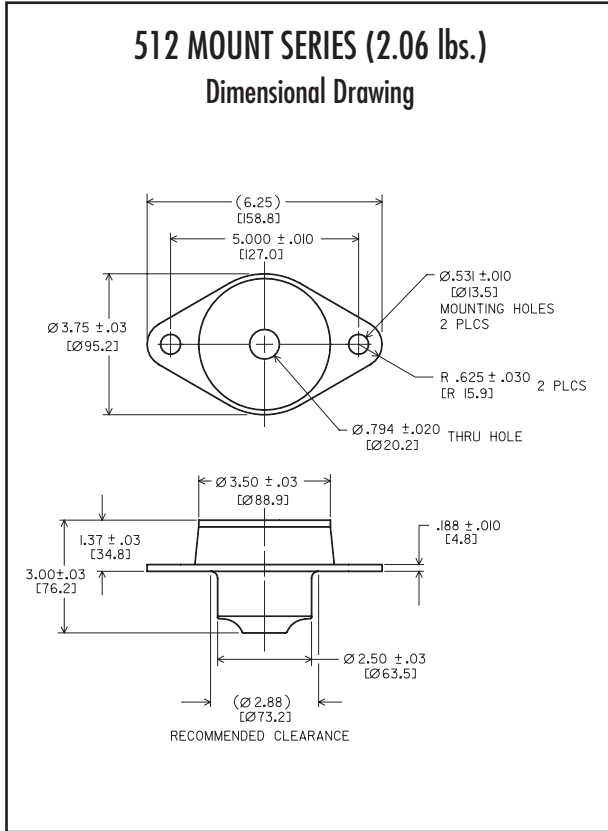
Dimensions & Performance Characteristics



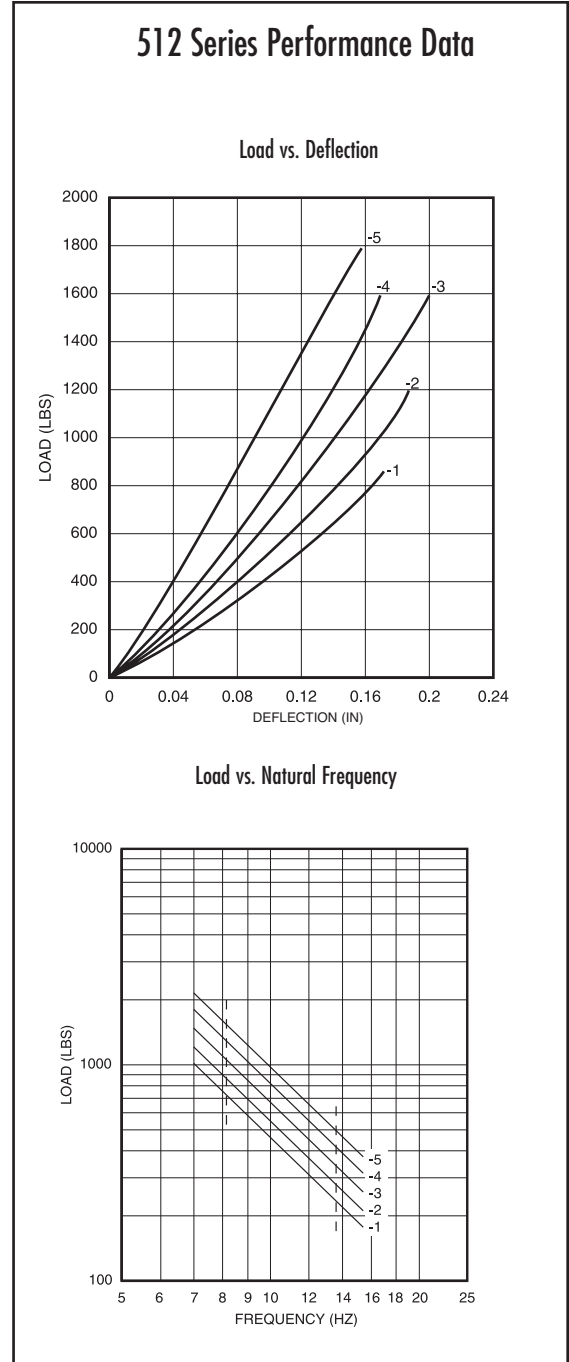
Code	510 SERIES LOAD RANGE (lbs.)				COLOR CODE
	Axial Static Load Range		Radial Static Load Range		
	Nominal	Max.	Nominal	Max.	
-1	320	480	150	320	Orange & White
-2	380	570	190	380	Yellow & White
-3	460	690	230	460	Green & White
-4	560	840	280	560	Blue & White
-5	680	1020	340	680	Brown & White

500 MOUNT SERIES: 512

Dimensions & Performance Characteristics

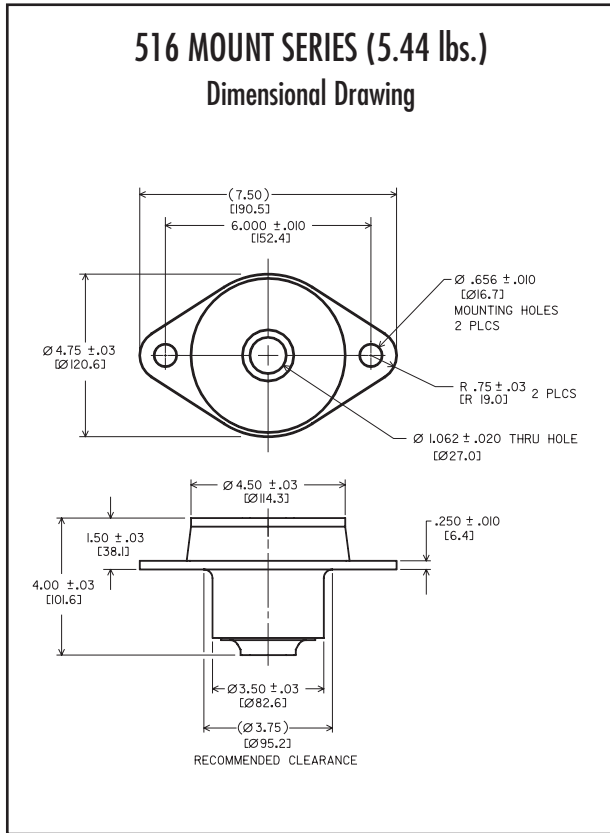


512 SERIES LOAD RANGE (lbs.)					COLOR CODE
Code	Axial Static Load Range		Radial Static Load Range		
	Nominal	Max.	Nominal	Max.	
-1	460	690	230	450	Red & White
-2	560	840	280	560	Orange & White
-3	680	1020	340	680	Yellow & White
-4	830	1245	415	830	Green & White
-5	1000	1500	500	1000	Blue & White

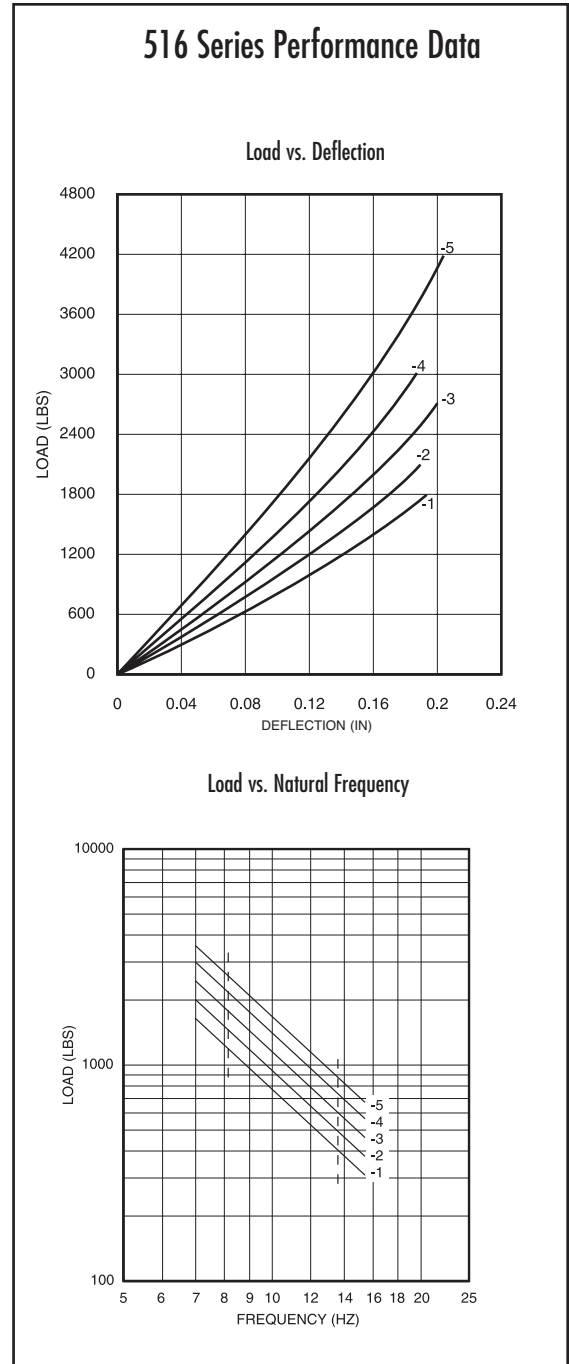


500 MOUNT SERIES: 516

Dimensions & Performance Characteristics



516 SERIES LOAD RANGE (lbs.)					COLOR CODE
Code	Axial Static Load Range		Radial Static Load Range		
	Nominal	Max.	Nominal	Max.	
-1	830	1245	415	830	Red & White
-2	1000	1500	500	1000	Orange & White
-3	1210	1815	605	1210	Yellow & White
-4	1470	2205	735	1470	Green & White
-5	1780	2700	890	1780	Blue & White

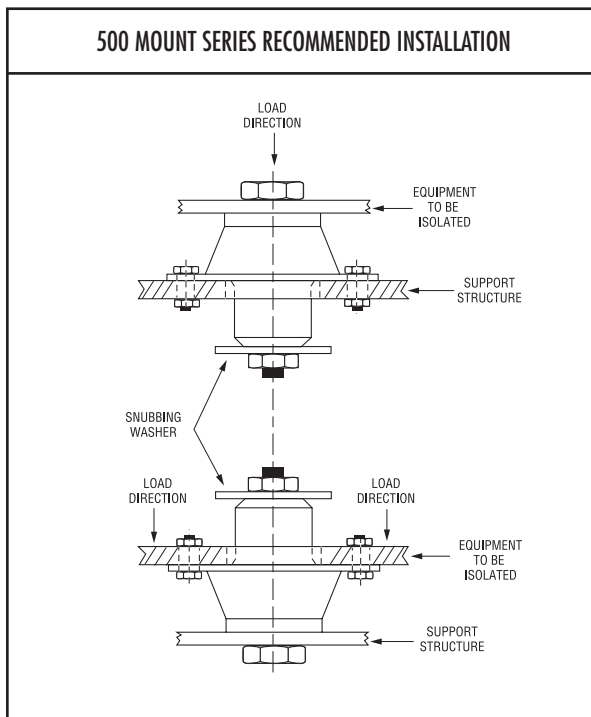


500 MOUNT SERIES:

Technical Data

500 SERIES MAXIMUM TIGHTENING TORQUES (ft-lb.)			
Part #	Bolt Diameter	Torque (dry)	Torque (lubricated or plated)
505	.313	25*	20*
506	.375	45*	35*
507	.433	80*	60*
508	.500	120*	90*
510	.625	240*	180*
512	.750	380	280
516	1.000	365	275

* = GRADE 8 BOLT TORQUE



HOW TO ORDER 500 SERIES ISOLATORS

500 - 1 N S

Basic model # →

Code for load rating →

"N" = Neoprene

"R" = Natural Rubber

"B" = Butyl

"S" = Silicone

"L" = Barry LT

"S" = Standard resistant varnish

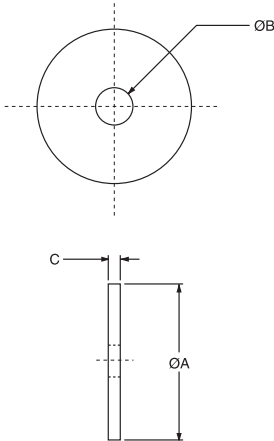
"P" = Black enamel paint

"E" = Electroless nickel

Standard suffix is "NS". Consult factory for availability and compatibility of other materials & finishes.

500 MOUNT SERIES: SNUBBING WASHER

Dimensions



500 MOUNT SERIES SNUBBING WASHER

The use of snubbing washers is recommended to ensure proper static and dynamic loading of the isolator and retention of suspended equipment under severe shock environments.

Snubbing washers are ordered by separate part numbers as shown in the table below. The standard material is low-carbon steel and the standard finish is zinc plate. Other materials and finishes are available upon request.

Size	"A" Dia.	"B" Dia.	"C"	Part #
505	1.63	.322	.093	R18733-6
506	1.75	.385	.093	R18733-7
507	2.00	.450	.125	R18733-1
508	2.00	.510	.125	R18733-2
510	2.25	.635	.164	R18733-3
512	2.50	.780	.188	R18733-4
516	3.25	1.010	.250	R18733-5