

500SL MOUNT SERIES

Rugged, versatile isolator utilizes elastomer-in-shear for low frequency vibration and in compression for impact shock.

APPLICATIONS

- Truck, bus and marine engines
- Generators
- HVAC equipment
- Farm and construction equipment
- Truck cabs
- Machinery, pumps & compressors

FEATURES

- Fail-safe when used with snubbing washer
- Axial to radial stiffness of 1:2.5
- Low natural frequency
- Sturdy, reliable construction

BENEFITS

- Economical
- Bonded construction provides constant performance characteristics
- Overlapping load ranges

LOAD RANGE

- 558SL = 2 load ratings to 250 lbs. per mount
- 562SL = 2 load ratings to 520 lbs. per mount
- 566SL = 2 load ratings to 1,800 lbs. per mount



Barry 500SL Series mounts are best suited for applications that require a low vertical natural frequency in conjunction with impact shock protection and superior structure borne noise attenuation.

Specifications

• Natural Frequency	7-10 Hertz Axial
• Transmissibility at resonance	8:1
• Resilient Element	Neoprene
• Standard Materials	Cold-rolled steel
• Weight	See dimensional drawings

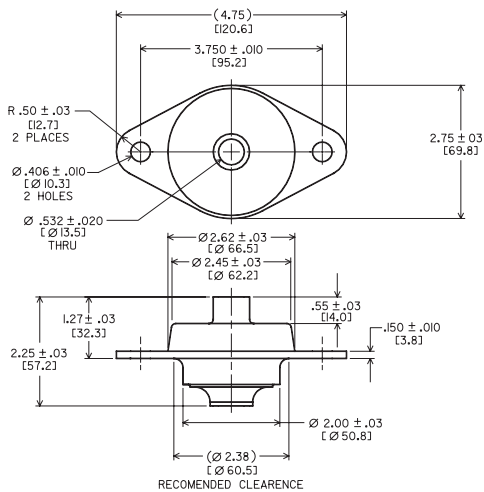
Environmental Data

- Neoprene elastomer has an operating temperature range of -20°F to +180°F (-30°C to +82°C) and is resistant to oils, most solvents and ozone.
- Special elastomers and finishes are available for applications in severe environments. Please note that Silicone elastomer is not compatible with nickel plating.

500SL MOUNT SERIES: 558SL/562SL

Dimensions & Performance Characteristics

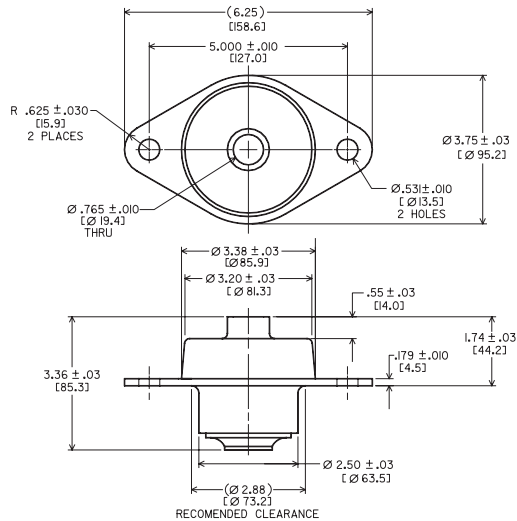
SERIES 558SL Dimensional Drawing (11 oz.)



AXIAL STATIC LOAD RANGE - 558SL

Code	Minimum	Maximum
-1	50 lbs.	110 lbs.
-2	90 lbs.	180 lbs.

SERIES 562SL Dimensional Drawing (1 lb. 13 oz.)

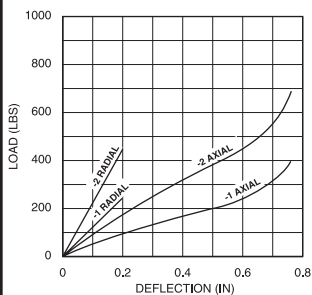


AXIAL STATIC LOAD RANGE - 562SL

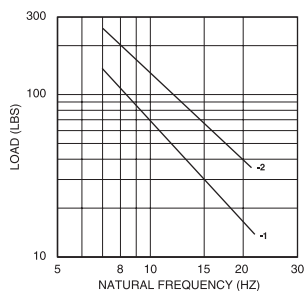
Code	Minimum	Maximum
-1	130 lbs.	260 lbs.
-2	260 lbs.	520 lbs.

558SL Series Performance Data

Load vs. Deflection

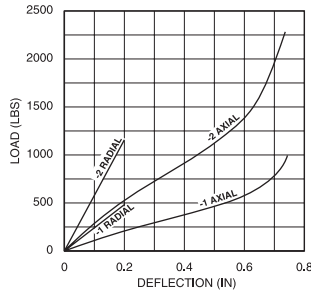


Load vs. Natural Frequency

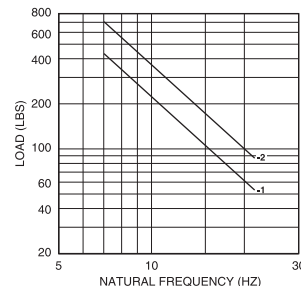


562SL Series Performance Data

Load vs. Deflection

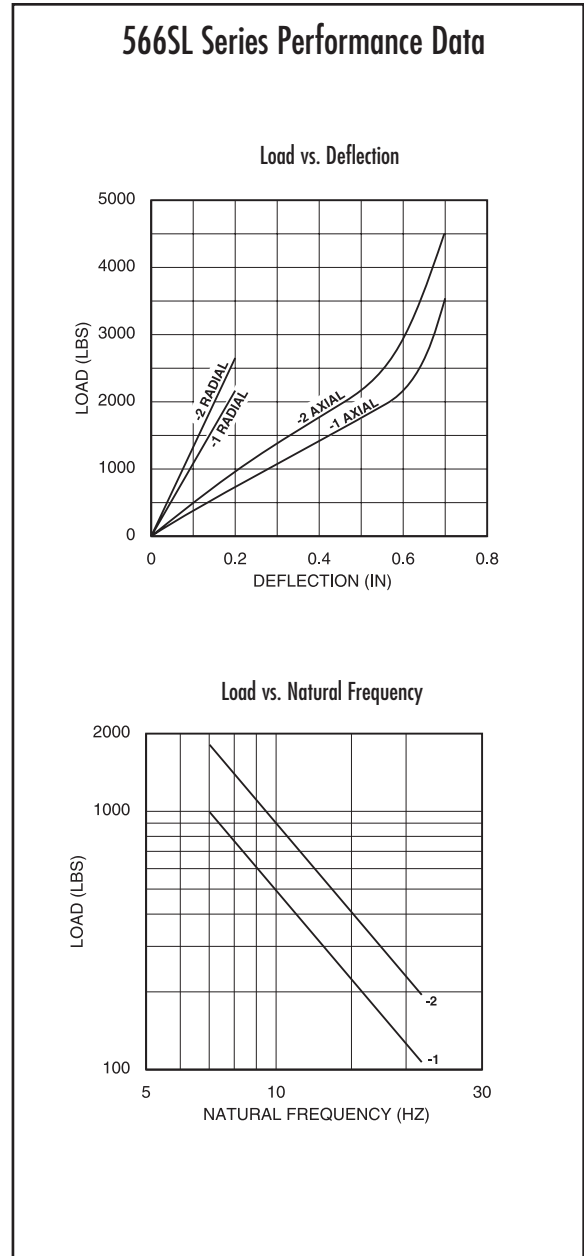
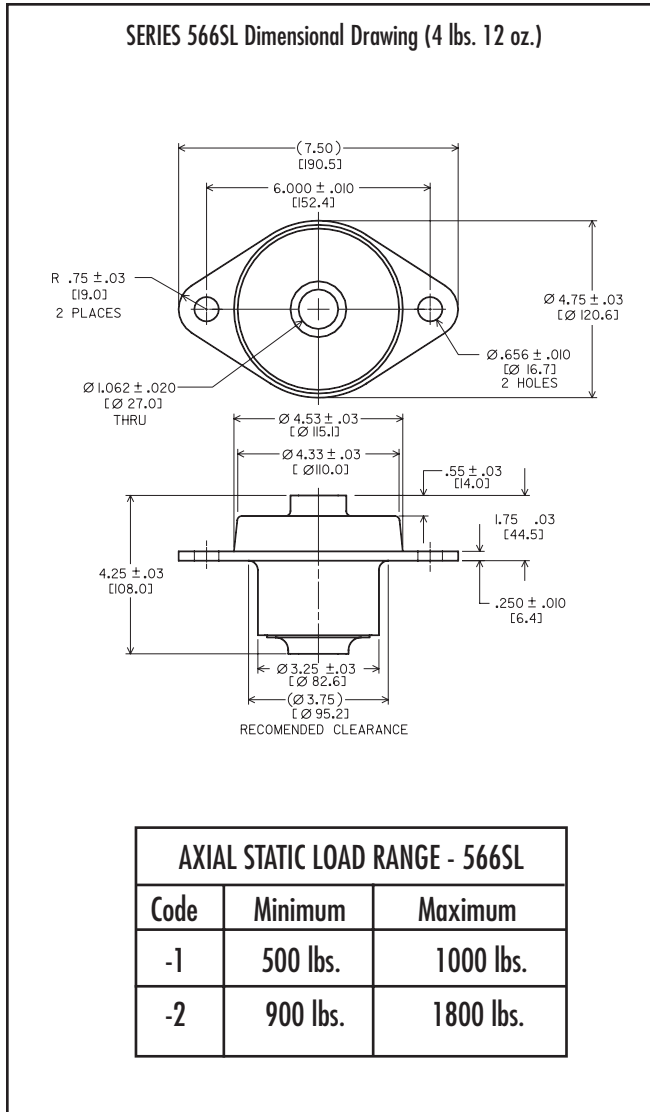


Load vs. Natural Frequency



500SL MOUNT SERIES: 566SL & SNUBBING WASHER

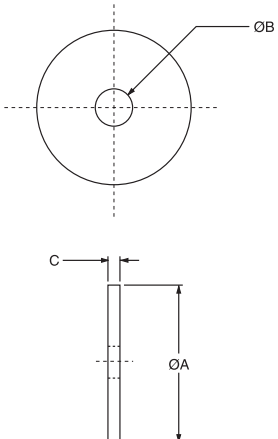
Dimensions & Performance Characteristics



500SL MOUNT SERIES: SNUBBING WASHER

Dimensions

500SL MOUNT SERIES SNUBBING WASHER



Size	"A" Dia.	"B" Dia.	"C"	Part #
558SL	2.00	.510	.125	R18733-2
562SL	2.50	.760	.188	R18733-4
566SL	3.25	1.010	.250	R18733-5

The use of snubbing washers is recommended to ensure proper static and dynamic loading of the isolator and retention of suspended equipment under severe shock environments.

Snubbing washers are ordered by separate part numbers as shown in the above table. The standard material is low-carbon steel and the standard finish is zinc plate. Other materials and finishes are available upon request.



HOW TO ORDER 500SL SERIES ISOLATORS

500SL - 1 N S

Basic model # ———>

Code for load rating ———>

"N" = Neoprene ———>

"R" = Natural Rubber

"B" = Butyl

"S" = Silicone

"L" = Barry LT

"S" = Standard resistant varnish ———>

"P" = Black enamel paint

"E" = Electroless nickel

Standard suffix is "NS". Consult factory for availability and compatibility of other materials & finishes.