

6300/6550 MOUNT SERIES

Small, low-profile, all-attitude elastomeric mounts for vibration and shock protection.

APPLICATIONS

- Airborne electronics and racking
- Ruggedized disk drives
- Electronic chassis
- Electric motors

FEATURES

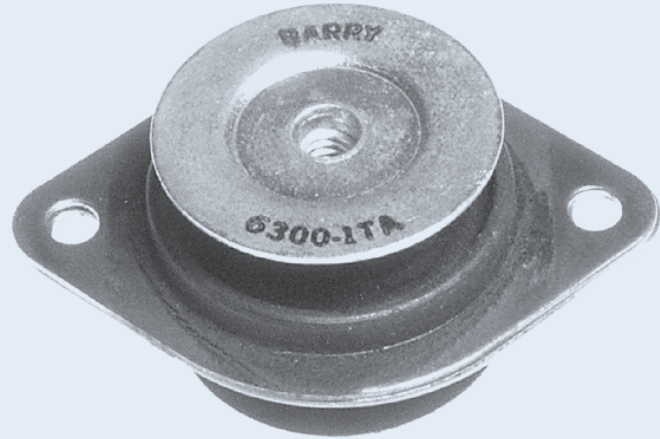
- All attitude
- Low-cost
- Axial to radial stiffness of 1:1
- Compact, low-profile design

BENEFITS

- Compact size minimizes required mounting space
- Mounting permitted at any angle
- Fail-safe design captivates equipment even if elastomer is destroyed

LOAD RANGE

- 6300 = 4 load ratings to 11 lbs. per mount
- 6550 = 4 load ratings to 18 lbs. per mount



Barry 6300/6550 Series Mounts are designed for use either as an integral mount or isolation system for light to medium weight electronic equipment. Versions are available in Neoprene or Hi-Damp Silicone for MIL specifications.

Specifications

• Natural Frequency	15-40 Hertz (6300) 20-40 Hertz (6550)
• Transmissibility at resonance	4.0 Max. (Hi-Damp Silicone) 10.0 Max. (Neoprene)
• Resilient Element	Hi-Damp Silicone or Neoprene
• Standard Materials	Varies with model
• Weight	6300 = 1.0 oz. 6550 = 1.0 oz.

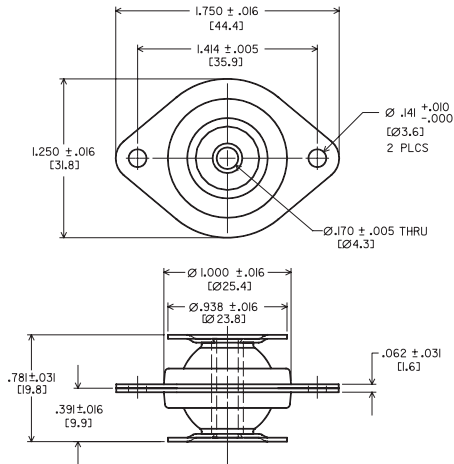
Environmental Data

- Hi-Damp Silicone is ideal for applications requiring greater damping, extreme temperature service and resistance to fungus and ozone. Operating temperature range is -67°F to +300°F (-55°C to +150°C).
- Neoprene operating temperature range is -20°F to +180°F (-30°C + 83°C) and is resistant to oil and ozone.

6300 MOUNT SERIES:

Dimensions & Performance Characteristics

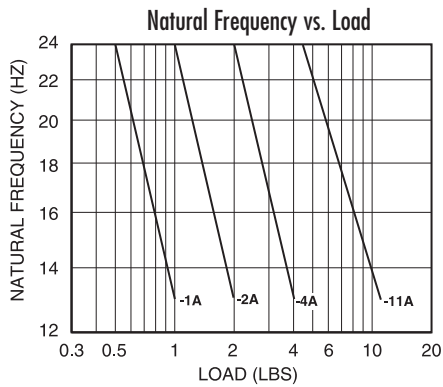
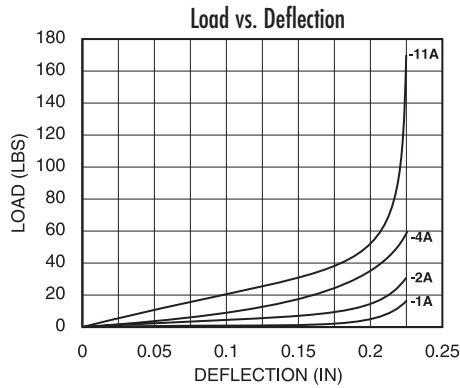
SERIES 6300 DIMENSIONAL DRAWING



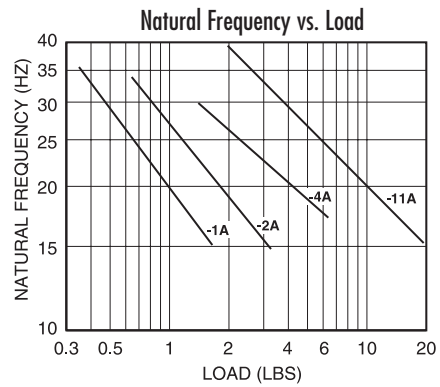
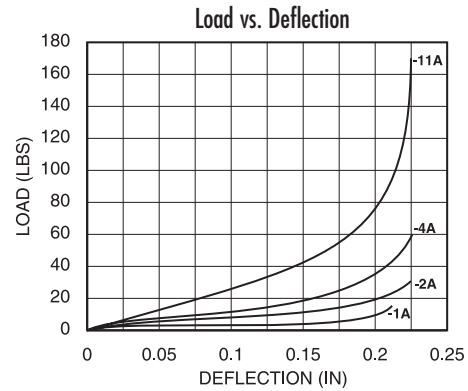
LOAD RATINGS

Nat. Rubber	Hi-Damp	Neoprene	Max. Load/Mount (lbs.)
6300-1A	N6300-1A	6300-1NA	1
6300-2A	N6300-2A	6300-2NA	2
6300-4A	N6300-4A	6300-4NA	4
6300-11A	N6300-11A	6300-11NA	11

6300-A and 6300-NA Series Performance Data



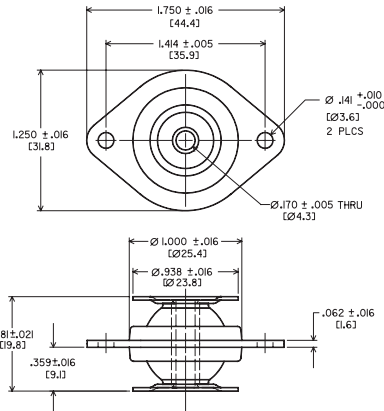
N6300 Series Performance Data



6550 MOUNT SERIES:

Dimensions & Performance Characteristics

SERIES 6550 DIMENSIONAL DRAWING

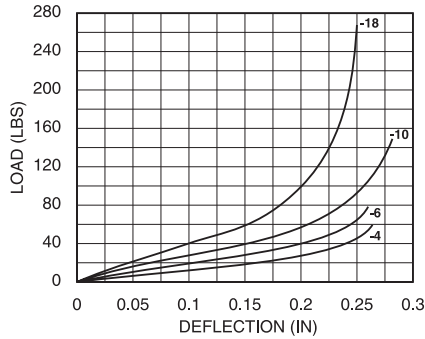


6550 SERIES LOAD RATINGS

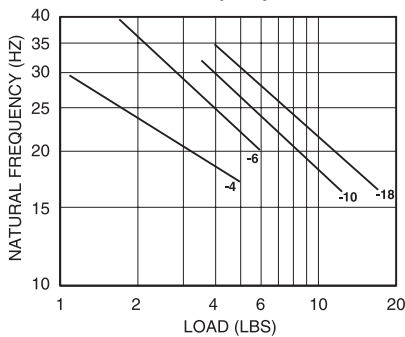
Nat. Rubber	Hi-Damp	Neoprene	Max. Load/Mount (lbs.)
6550-4	N6550-4	6550-4N	4
6550-6	N6550-6	6550-6N	6
6550-10	N6550-10	6550-10N	10
6550-18	N6550-18	6550-18N	18

6550 and 6550-N Series Performance Data

Load vs. Deflection

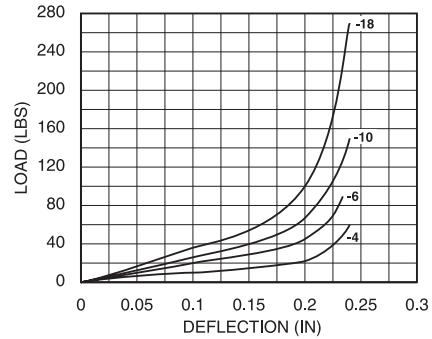


Natural Frequency vs. Load



N6550 Series Performance Data

Load vs. Deflection



Natural Frequency vs. Load

