

# HR MOUNT SERIES

Vibration mounts for effective isolation of small to medium sized diesel engines.

## APPLICATIONS

- Small to medium diesel engines
- Generators
- Recreational/off road vehicles
- Farm and construction equipment
- Motors
- Machinery, pumps & compressors

## FEATURES

- Wide load range
- Axial to radial stiffness of 6:1
- Low stiffness in roll mode
- Sturdy, reliable construction

## BENEFITS

- Built-in rebound protection
- Excellent performance even with difficult to isolate five, three, two or even single cylinder engines
- Overlapping load ranges
- Fail-safe when used with snubbing washer

## LOAD RANGE

- 2 Sizes and 5 stiffness from 25 - 400 lbs. per isolator



Barry HR Series mounts are best suited for isolation of diesel engines with five or less cylinders for on or off-highway applications. The standard neoprene elastomer provides resistance to oils and most solvents. Other elastomers are available, consult factory for more information.

## Specifications

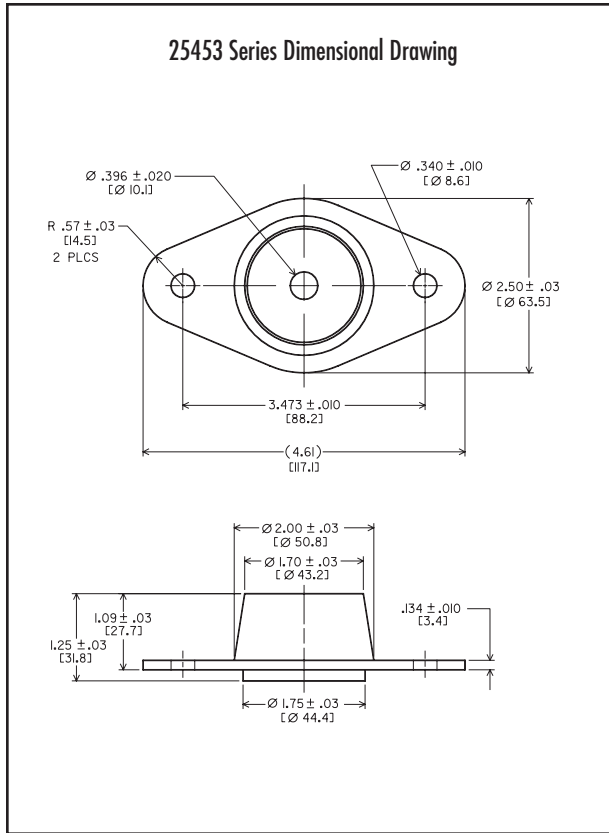
|                                 |                             |
|---------------------------------|-----------------------------|
| • Natural Frequency             | 10-20 Hertz                 |
| • Transmissibility at resonance | 8:1                         |
| • Resilient Element             | Neoprene                    |
| • Standard Materials            | Steel and sintered metal    |
| • Weight                        | 7 oz. (25453) 9 oz. (25641) |

## Environmental Data

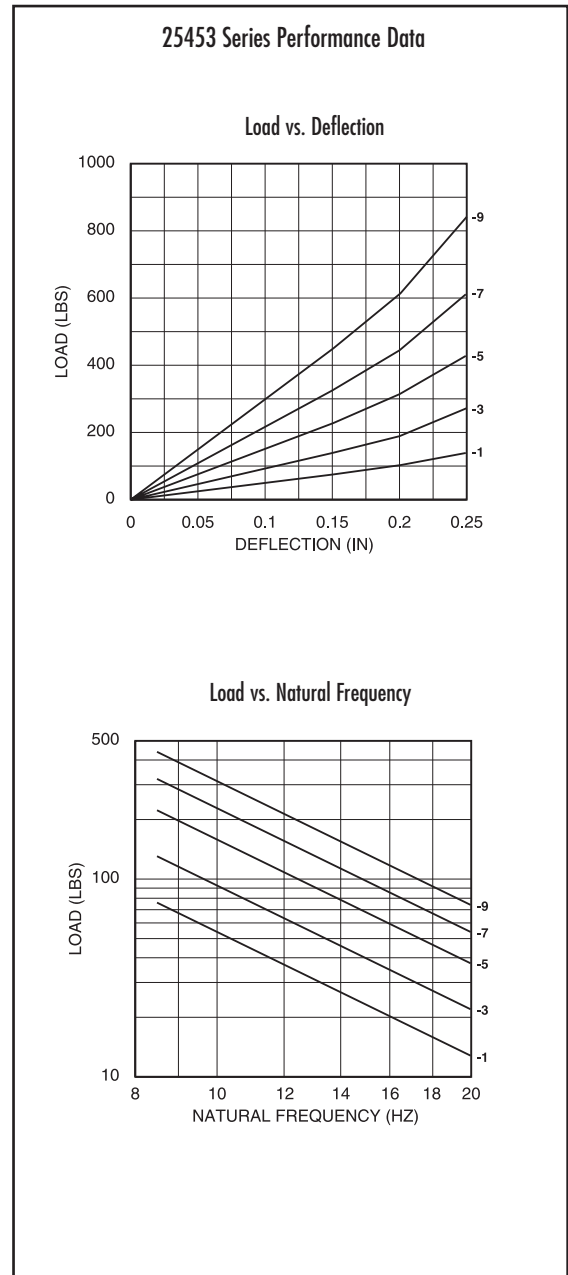
- Neoprene elastomer has an operating temperature range of -20°F to +180°F (-30°C to +82°C) and is resistant to oils, most solvents and ozone.

# HR MOUNT SERIES: 25453

## Dimensions & Performance Characteristics

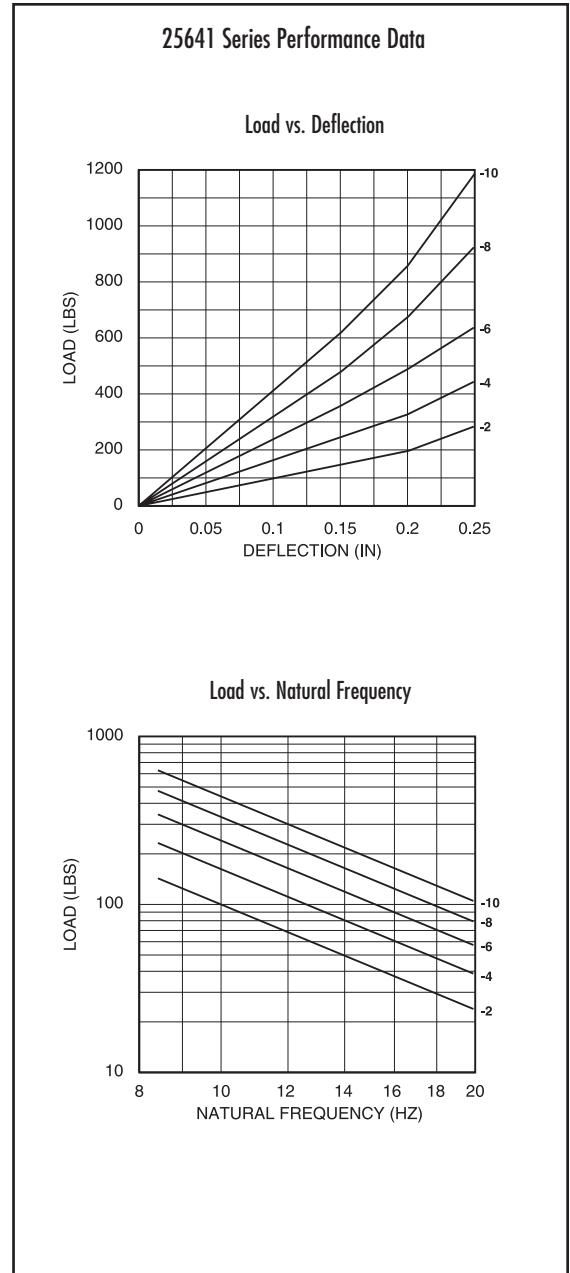
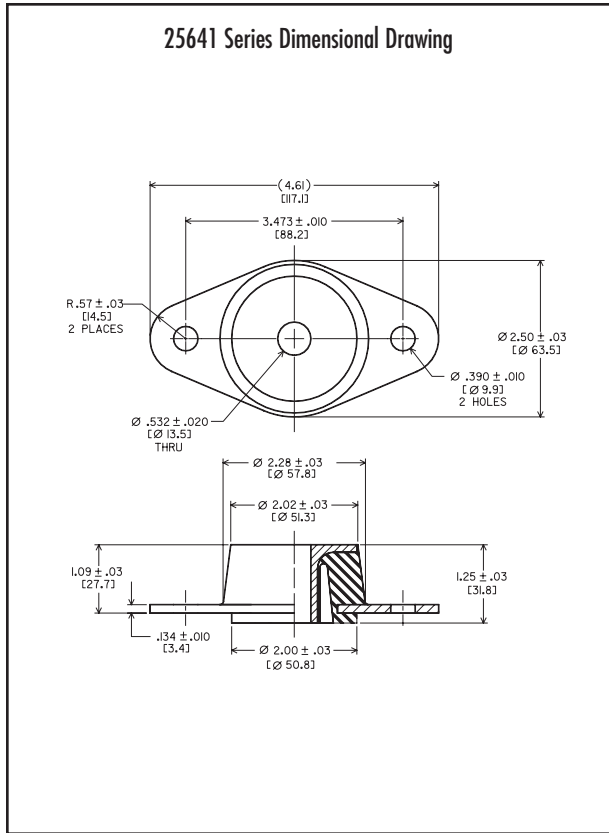


| AXIAL STATIC LOAD RANGE - 25453 |          |            |
|---------------------------------|----------|------------|
| Code                            | Nominal  | Color Code |
| -1                              | 50 lbs.  | Red        |
| -3                              | 90 lbs.  | White      |
| -5                              | 150 lbs. | Blue       |
| -7                              | 215 lbs. | Purple     |
| -9                              | 300 lbs. | Gray       |



# HR MOUNT SERIES: 25641

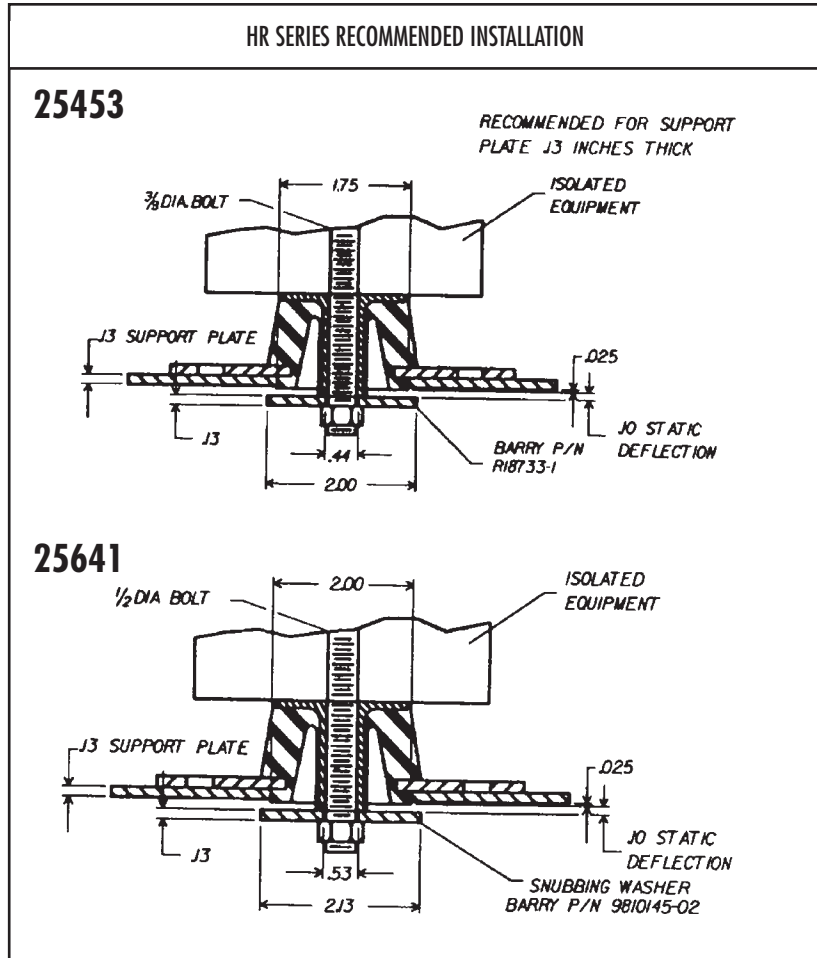
## Dimensions & Performance Characteristics



| AXIAL STATIC LOAD RANGE - 25641 |          |            |
|---------------------------------|----------|------------|
| Code                            | Nominal  | Color Code |
| -2                              | 100 lbs. | Red        |
| -4                              | 155 lbs. | White      |
| -6                              | 230 lbs. | Blue       |
| -8                              | 320 lbs. | Purple     |
| -10                             | 420 lbs. | Gray       |

# HR MOUNT SERIES:

## Technical Data

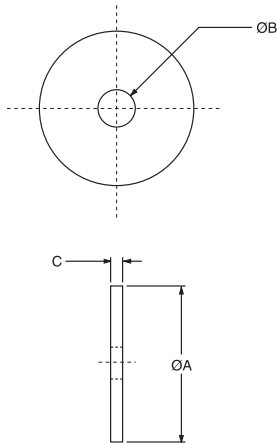


| HR SERIES MAXIMUM TIGHTENING TORQUES (FT - LBS) |               |              |                               |
|---|---------------|--------------|-------------------------------|
| Part #  | Bolt Diameter | Torque (dry) | Torque (lubricated or plated) |
| 25453   | .375          | 45*          | 35*                           |
| 25641   | .500          | 120*         | 90*                           |
| * = GRADE 8 BOLT TORQUE                         |               |              |                               |

# HR MOUNT SERIES: SNUBBING WASHER

## Dimensions

### HR MOUNT SERIES SNUBBING WASHER



The use of snubbing washers is recommended to ensure proper static and dynamic loading of the isolator and retention of suspended equipment under severe shock environments.

Snubbing washers are ordered by separate part numbers as shown in the table below. The standard material is low-carbon steel and the standard finish is zinc plate. Other materials and finishes are available upon request.

| Size  | "A" Dia. | "B" Dia. | "C"  | Part #        |
|-------|----------|----------|------|---------------|
| 25453 | 2.00     | .45      | .125 | R18733-1      |
| 25641 | 2.13     | .532     | .134 | 9810145-02804 |