

MARINE MOUNT SERIES

Effective reduction of noise and vibration of internal combustion diesel engines in marine installations.

APPLICATIONS

- Marine Internal Combustion Engines
- Pumps
- Compressors
- Generator Sets

FEATURES

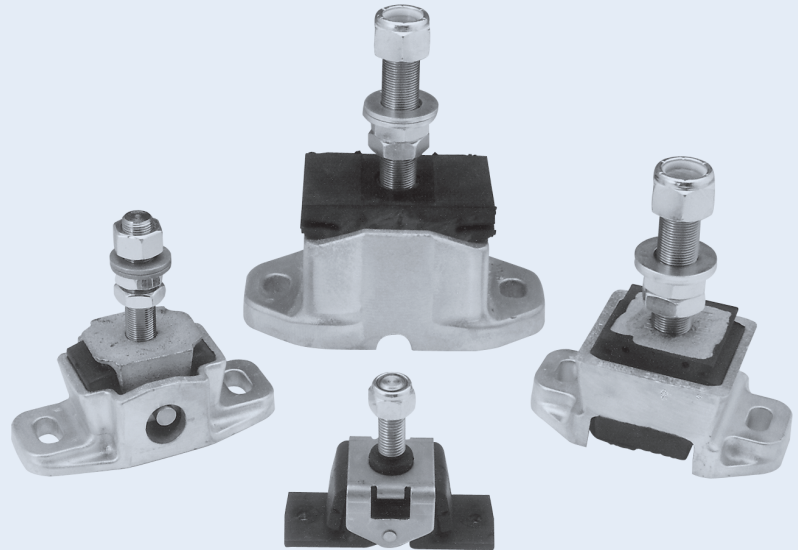
- Mechanically captive
- Resilient elements of oil-resistant Neoprene
- Corrosion resistant exposed metal parts
- Off-the-shelf availability
- Easy to install
- Proven durability
- Height adjustability for engine alignment purposes

BENEFITS

- Improved ride comfort
- Significantly reduces mechanical noise transmission
- Able to transmit propeller thrust longitudinally along mount
- Superior isolation at start-up and low RPMs

LOAD RANGE

- 4 versions with 17 load ratings from 39 - 1,980 lbs. per mount



Barry Controls Marine Mounts are designed to provide effective noise and vibration isolation of marine engines up to, but not limited to, 1,000 hp.

One of the most important features of Barry Controls Marine Mounts is their ability to isolate vibration while transmitting full propeller thrust, efficiently isolating engine noise and vibration from the hull of the vessel.

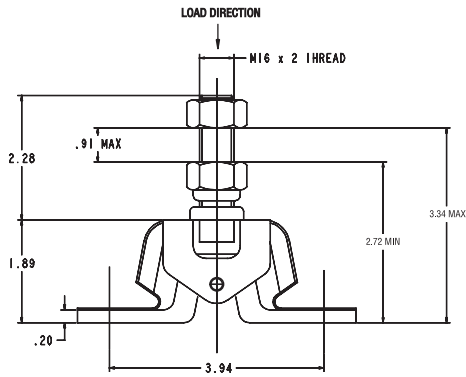
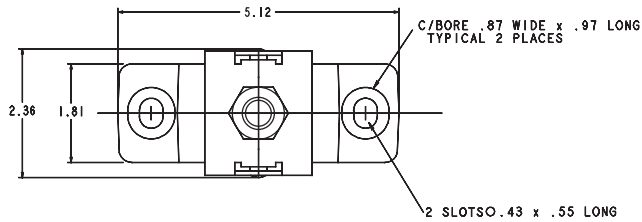
This improves the reliability of equipment, and provides unmatched occupant comfort, particularly during start up or while at low RPMs.

Environmental Data

- Neoprene elastomer has an operating temperature range of -20°F to +180°F (-30°C to +82°C) and is resistant to oils, salt spray, ozone and oil-based solvents.

MARINE MOUNT SERIES: F50

Dimensions & Performance Characteristics



F50 Marine Mounts are compact, captive marine isolators designed to support lightweight loads from 39-380 lbs. per mount.

They provide effective noise and vibration isolation of marine engines up to 250 horsepower.

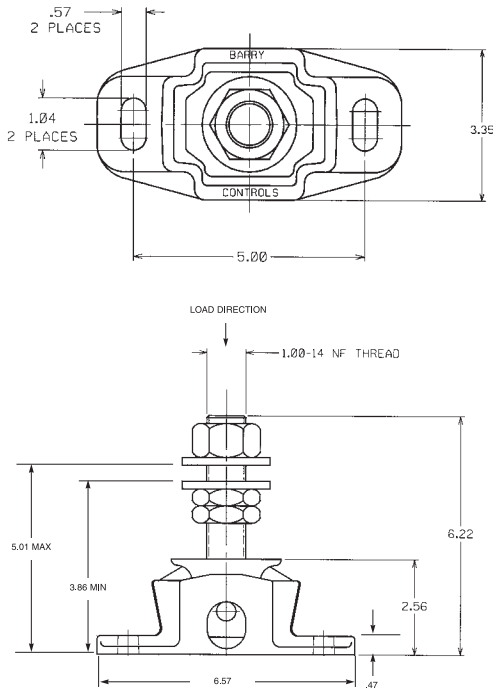
NATURAL FREQUENCY	10-16 Hertz
TRANSMISSIBILITY AT RESONANCE	8:1
RESILIENT ELEMENT	Neoprene
STANDARD MATERIALS	Corrosion resistant steel & Aluminum
WEIGHT	1.65 lbs.

PART #	LOAD RANGE (lbs.)								MINIMUM LOAD (lbs.)	MAXIMUM LOAD (lbs.)
	30	60	90	120	150	200	300	400		
F50-1-1	←→								39	99
F50-1-2		←→							60	160
F50-1-3			←→						90	231
F50-1-4				←→					121	300
F50-1-5					←→				160	380

MARINE MOUNT SERIES: 27166

Dimensions & Performance Characteristics

NOTE: SEE BELOW FOR 3/4 STUD INFORMATION



27166 Marine Mounts are compact, captive marine isolators designed to support light to medium loads from 138-750 lbs. per mount.

They provide effective noise and vibration isolation of marine engines up to 400 horsepower.

NATURAL FREQUENCY	10-16 Hertz
TRANSMISSIBILITY AT RESONANCE	8:1
RESILIENT ELEMENT	Neoprene
STANDARD MATERIALS	Corrosion resistant steel & Aluminum
WEIGHT	4.25 lbs.

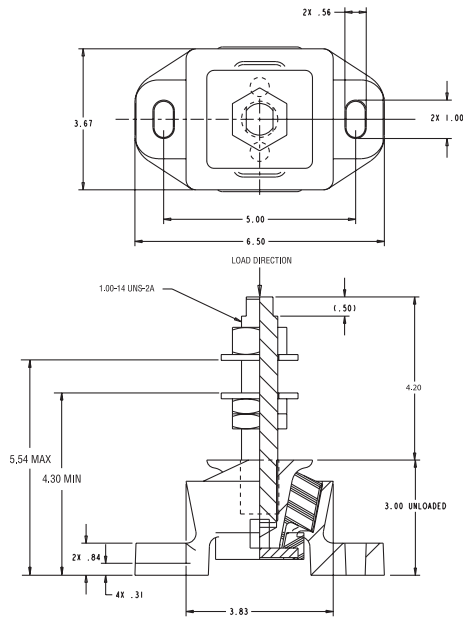
PART #	LOAD RANGE (lbs.)								MINIMUM LOAD (lbs.)	MAXIMUM LOAD (lbs.)
	0	100	200	300	400	500	600	700		
27166-4*	↔								138	225
27166-7+	↔↔								190	350
27166-6	↔↔↔								300	500
27166-11	↔↔↔↔								450	750

* Order Part #27166-8 for 3/4" stud and adjustability from 4.82 max to 3.51 min.

+ Order Part #27166-9 for 3/4" stud and adjustability from 4.82 max to 3.51 min

MARINE MOUNT SERIES: 27391

Dimensions & Performance Characteristics



27391 Marine Mounts are compact, captive marine isolators designed to support medium loads from 125-1000 lbs. per mount.

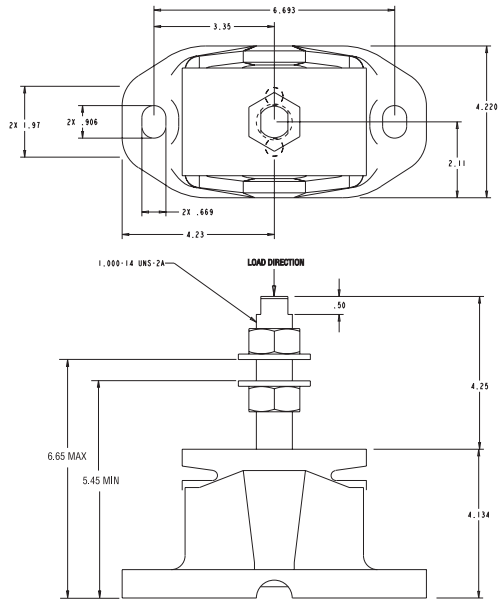
They provide effective noise and vibration isolation of marine engines up to 500 horsepower and are ideal for V-drive applications.

NATURAL FREQUENCY	8-14 Hertz
TRANSMISSIBILITY AT RESONANCE	8:1
RESILIENT ELEMENT	Neoprene
STANDARD MATERIALS	Corrosion resistant steel & Aluminum
WEIGHT	6.15 lbs.

PART #	LOAD RANGE (lbs.)					MINIMUM LOAD (lbs.)	MAXIMUM LOAD (lbs.)
	125	250	500	750	1,000		
27391-2	↔					125	275
27391-3		↔				250	500
27391-4			↔			350	750
27391-5				↔		500	1,000

MARINE MOUNT SERIES: 27458

Dimensions & Performance Characteristics



27458 Marine Mounts are compact, captive marine isolators designed to support medium to heavy loads from 350-1,980 lbs. per mount.

They provide effective noise and vibration isolation of marine engines up to 1,000 horsepower and are ideal for V-Drive applications.

NATURAL FREQUENCY	10-16 Hertz
TRANSMISSIBILITY AT RESONANCE	8:1
RESILIENT ELEMENT	Neoprene
STANDARD MATERIALS	Corrosion resistant steel & Aluminum
WEIGHT	10.6 lbs.

PART #	LOAD RANGE (lbs.)					MINIMUM LOAD (lbs.)	MAXIMUM LOAD (lbs.)
	300	500	1,000	1,500	2,000		
27458-2	↔					350	814
27458-3	↔					506	1,056
27458-4	↔					726	1,430
27458-5	↔					880	1,980